

Themes

My Imagination

Wands, costumes, and masks will inspire lots of pretend play, creative art, and active games. Children will test different feelings as they get into character. The possibilities for play are endless when we use our imaginations!

Helpful Habits

Families often gather at this time of year. This theme offers playful ways to practice polite interactions with friends and family members. Children will explore different ways of being helpful, learn about sharing and turn-taking, practice self-care, and more.

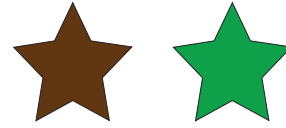
Sun, Moon & Stars

The sky and different elements in it are always a great wonder for children. Throughout this theme, children will learn about the sun and daytime, the moon and nighttime, and other sky features. It also serves as an introduction to outer space, our planet, and ways to care for it.

Winter Magic

Winter is here, and snow is upon us. Practice matching, sorting, and more with mittens and other winter gear. Engage toddlers in meaningful science activities by exploring the snow, cold, and ice.

Color/Shape Opposites



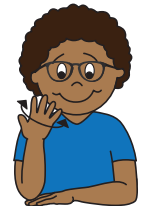
day/night

Sign Language



clean

Place hand in front of you, palm up. Slide other hand across flat hand as if wiping. Repeat twice.



tree

Place elbow on top of hand. Wiggle raised hand to look like leaves fluttering in the wind.



coat

Form A hands near shoulders. Move hands down and inward as if putting on a coat.

Learn with Me!

Imaginative Play

Between 2 and 3, toddlers begin engaging meaningfully in pretend play. They may pretend a block is cake or imitate daily routines, like pretending to give a toy a bath. Take advantage of everyday items to pretend play together. A box could be a table for a tea party, or your child could use it to make special deliveries around the house.

Winter Gear

As the season shifts, so does what we wear. Support your child in making connections between the weather and clothing choices by describing items as you help your child get dressed, focusing on their function, e.g., "This green sweater will keep your arms warm."

My Project: Pretty Place Mat

When I bring this project home, we can:

- Talk about the seasonal symbols on the place mat.
- Compare it to place mats we have on our tables.
- Use it during mealtime.



*Graphics are intended to show samples of projects.
Materials may be substituted or used differently.*

FAMILY CONNECTION

Book List

I'm a Little Teapot
by Iza Trapani

Let's Play!
by Hervé Tullet

The Thank You Book
by Mary Lyn Ray

You Are My Little Pumpkin Pie
by Amy E. Sklansky

8 Little Planets
by Chris Ferrie

Space Walk
by Salina Yoon

The Joyful Book
by Todd Parr

Songs & Rhymes

I'm a Little Teapot
Traditional

I'm a little teapot,
Short and stout.
Here is my handle,
Here is my spout.
When I get all steamed up,
Hear me shout:
Tip me over
And pour me out!

Sally Go Round the Sun

Sally go round the sun,
Sally go round the moon,
Sally go round the chimney pots
Every afternoon.
BOOM!

Recipe

Strawberry Tea Sandwiches

- strawberries
- bread
- strawberry OR plain cream cheese

Invite your child to help you wash the strawberries. Then, prepare the strawberries for the tea sandwiches by trimming the tops and slicing them.



Set out slices of bread. Help your child spread strawberry or plain cream cheese onto the slices. Work together to scatter strawberry slices on top of half of the bread slices. Cover with the other pieces of bread to make sandwiches.

Cut the sandwiches into triangles or squares, and enjoy as a snack or during a pretend tea party!

Reminders
